

32. KOPRAKARIKAS

32th KOBRAS CUP



**Küka, Vastse-Kuuste
Kanepi and Põlva parish, Põlva county
August 1-2, 2020**

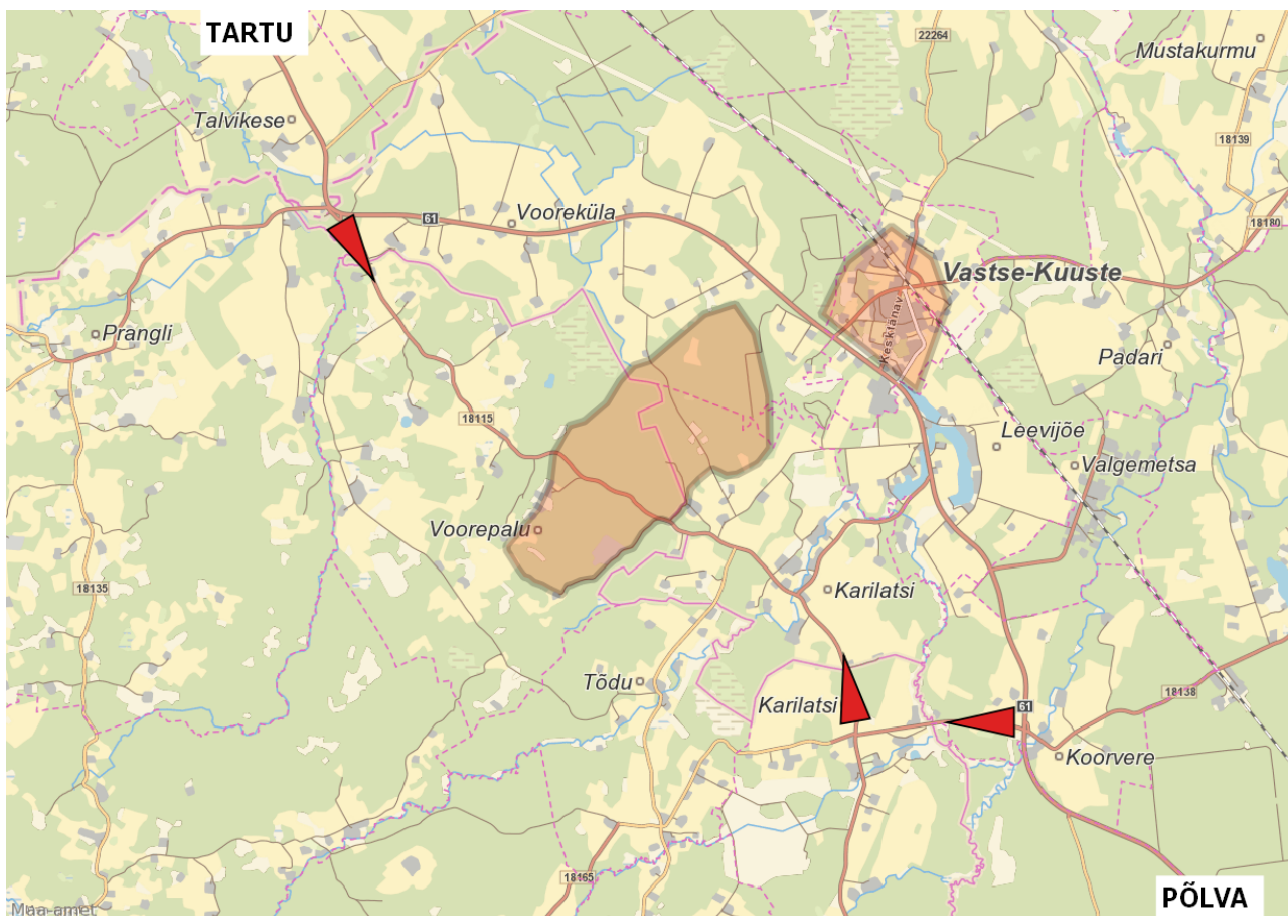
INVITATION

Orienteering Club Põlva Kobras invites all orienteering enthusiasts to 32th Koprakarikas. We are gladly welcoming all participants from beginners and rising stars to seasoned masters.

TIME, VENUE and PROGRAM

Road signs will be on Põlva-Tartu road (nr 61).

Saturday, August 1	Küka	Middle distance	11.00 (first start)
Saturday, August 1	Vastse-Kuuste	Sprint	18.00 (first start)
Sunday, August 2	Küka	Long distance	11.00 (first start)



ORGANIZERS

Orienteering Club Põlva Kobras. Address: Käisi str 11, 63307 Põlva, Estonia
Event director: Katrin Viilu, phone +372 517 7942
Course setter: Raido Mitt

CATEGORIES AND APPROXIMATE COURSE LENGTHS (KM)

	middle	sprint	long		middle	sprint	long
TL	2,5	1,5	4,0	PL	3,0	2,0	5,0
N8,9,10NR	1,5	1,0	2,0	M8,9,10NR	1,5	1,0	2,0
N12	1,6	1,2	3,0	M12	2,0	1,6	3,5
N14	2,0	1,4	3,5	M14	2,5	1,8	4,0
N16	2,5	1,6	4,5	M16	3,5	2,0	6,0
N18	3,0	1,8	6,0	M18	4,0	2,5	8,0
N20	3,5	1,8	7,0	M20	4,5	2,5	9,0
N21E	4,5	2,3	9,0	M21E	6,0	3,0	13,0
N21Tehno	3,5	1,8	7,0	M21Tehno	4,5	2,5	9,0
NB	2,5	1,5	4,0	MB	3,0	2,0	5,0
N35	3,5	1,8	7,0	M35	4,5	2,5	9,0
N40	3,0	1,8	6,0	M40	4,0	2,5	8,0
N45	3,0	1,8	5,5	M45	4,0	2,0	7,0
N50, 55	3,0	1,6	5,0	M50, 55	3,5	1,8	6,0
N60,65	2,5	1,4	4,5	M60,65	3,0	1,6	6,0
N70,75	2,0	1,2	4,0	M70	2,5	1,4	5,0
				M75,80	2,0	1,2	4,0

N – women; **M** – men; **E** – elite course; **Tehno** – technically demanding course; **NB/MB** – no age restrictions, technically simple (suitable for beginners); **TL, PL** – very simple course for beginners (born 2004 and later); **NR** – marked route; **OPEN** – free start time.

MAPS AND TERRAIN

Middle distance, Saturday, August 1, Kūka

Map scale: 1:7500 and 1:5000. Marked routes 1:4000. H=2.5 m.

<http://www.orienteerumine.ee/kaart/kaartshow.php?Kood=2017005>

Mapped by Kalle Remm in 2017 spring. Final revision 2020 summer by Raido Mitt.

Middle and small landforms, a lot of small contour objects. Maximum height difference is 40m (on one slope 30m). Runnability is from good to very good. Worse in marshes and thickets. Mostly coniferous forest. Many paths, roads and trails. Lot of clearings in different age.

Sprint, Saturday, August 1, Vastse-Kuuste

Map scale 1:4000, h=2.5 m.

Old map: <http://www.orienteerumine.ee/kaart/kaartshow.php?Kood=2013067>

Mapped by Mait Tõnisson in 2020 spring.

Urban landscape with private housing and bigger block buildings. Lot of open areas between buildings. Very fast.

Long distance, Sunday, August 2, Kūka

Map scale 1:10 000 and 1:7500. Marked routes 1:4000. H=2.5 m.

Old map: <https://www.orienteerumine.ee/kaart/kaartshow.php?Kood=2005052>

Mapped by Kalle Remm (2017) and Avo Veermäe (2019 autumn).

Middle and small landforms, a lot of small contour objects. Maximum height difference is 40m (on one slope 30m). Runnability is from good to very good. Worse in marshes and thickets. Mostly coniferous forest. Many paths, roads and trails. Lot of clearings in different age.

MAP EXAMPLES



❑ PUNCHING SYSTEM

SPORTident punching system will be used in all categories. In sprint touch-free SI stations are used. All types of SI-cards can be used (including series 8 and 9). SI-cards can be rented from the organizers (2€ per day). In case of losing or breaking the SI-card, fee of 35 € will be charged.

❑ STARTING PROCEDURE AND MAXIMUM RUNNING TIME

Individual interval start is used on all competition days. Participants must enter the pre-start area 2 minutes before the actual start time and referee checks the SI-card number. 1 minute before the start participant moves to his/her map and starts with the sound signal.

Maximum running time for middle distance is 90 minutes, sprint distance 60 minutes and for long distance 180 minutes. The start of the children's marked courses is open for 1,5 hours and the young participants can start at freely chosen times during this period.

❑ PARTICIPATION FEES

M,N 8-12	4 €/event
M,N 14-20, TL, PL	6 €/event
M,N 65-80	8 €/event
M,N 21-60	12 €/event
OPEN (no pre-registration required)	5 €/event (M,N 14-20), 8 €/event (M,N 21-80)

OK Põlva Kobras bank account no EE772200001120074588 in Swedbank

(bank address: Liivalaia 8, 15040 Tallinn, Estonia)

SWIFT/BIC: HABAE2X

IBAN: EE772200001120074588 Orienteerumisklubi Põlva Kobras

Participation fee must be paid at the same time with registration up until 27.07.2020.

❑ REGISTRATION

Registration is open until Monday, July 27, 23:59. Registration can be done using the following ways:

- online registration <https://www.osport.ee/>
- e-mail: okkobras@gmail.com

Registration is confirmed when participation fee has been paid.

PRIZE-GIVING

Best runners in each category will be awarded (total results of 3 events). In categories MN21E winners of each discipline will be awarded. Children running and finishing all 3 events in marked route (MN8,9,10 NR) will all get a small prize.

RESULTS AND ONLINE-COVERAGE

Online results and GPS-tracking is available for some categories. After the finish, every competitor will receive his/her split times. Results will be available in the competition centre and on competition website: <http://kobras.polvamaa.ee/>

ACCOMMODATION AND CATERING

Area for tents is prepared at the competition centre. Cafe at the competition centre.

Accommodation possibilities:

- **Hotel Pesa**, <http://www.kagureis.ee>
- **Mammaste Sports Centre** <http://tervisespordikeskus.ee/>
- **Taevaskoja Salamaa** <http://www.salamaa.eu/>
- **Jäägri Pubi** Jaama 16, Põlva tel. +372 517 1818 <https://www.facebook.com/Jaageri.Pubi>

Other accommodation and catering possibilities nearby can be found at:

<http://www.visitpolva.ee/index.php?lang=en>

PARKING

At the competition centre, parking is free of charge.

CULTURAL PROGRAMME

Cultural events in Põlva and surrounding parishes: <http://www.visitpolva.ee/events>

OTHER

No number bibs are used. Clean drinking water, toilets, kindergarten and cafe available at competition centre.

SUPPORTERS

Põlva County Expert Group of Cultural Endowment of Estonia, OÜ Maraton mets, Põlva COOP, AS Lõuna Pagarid, AS Pinest, Kanepi and Põlva parish

Previous winners of MW21E categories:

I	1989	Mammaste	(100)	Aleksei Nikitin (Pihkva)	Saima Värton (Kobras)
II	1990	Saverna	(181)	Rene Ottesson (ETKVL)	Ede Ümarik (Ilves)
III	1991	Krootuse	(242)	Rene Ottesson (ETKVL)	Ruth Vaher (Peko)
IV	1992	Janukjärv	(229)	Raul Kudre (Peko)	Ingrit Kala (Peko)
V	1993	Hatiku	(314)	Tarvo Avaste (Lehola)	Ruth Vaher (Peko)
VI	1994	Taevaskoja	(269)	Tarvo Avaste (Lehola)	Ruth Vaher (Peko)
VII	1995	Palojärve	(270)	Alar Viitmaa (Lehola)	Elo Saue (Ilves)
VIII	1996	Kanepi	(331)	Martin Veermäe (Ilves)	Laima Klauza (Kapa)
IX	1997	Palojärve	(371)	Sixten Sild (Võru)	Maret Vaher (Kobras)
X	1998	Küka	(376)	Tarvo Avaste (Võru)	Küllli Kaljus (Peko)
XI	1999	Karaski	(450)	Armo Hiie (Ilves)	Anu Annus (Peko)
XII	2000	Valgesoo	(472)	Erik Aibast (Tammed)	Kirti Rebane (Tammed)
XIII	2001	Pikajärve	(383)	Ville Vinkel (West)	Triin Vask (Ilves)
XIV	2002	Aarna	(657)	Igor Gorbatenko (Peterburg)	Kirti Rebane (Tammed)
XV	2003	Küka	(406)	Svajunas Ambrazas (Sakas)	Ingrit Kala (Peko)
XVI	2004	Hatiku	(365)	Marek Nõmm (Tammed)	Viivi-Anne Soots(Tammed)
XVII	2005	Akste	(371)	Peeter Pihl (Tammed)	Merike Vanjuk (Kape)

XVIII	2006	Piigaste	(401)	Rain Eensaar (Kobras)	Liis Johanson (Kobras)
XIX	2007	Krootuse	(450)	Timo Sild (Võru)	Merike Vanjuk (Kape)
XX	2008	Prangli	(472)	Timo Sild (Võru)	Merike Vanjuk (Kape)
XXI	2009	Leevi	(432)	Peeter Pihl (Tammed)	Merike Vanjuk (Kape)
XXII	2010	Janukjärv	(360)	Andreas Kraas (EKJ SK)	Merike Vanjuk (Kape)
XXIII	2011	Kooraste	(387)	Raido Mitt (Kobras)	Merike Vanjuk (Kape)
XXIV	2012	Lajavangu	(442)	Timo Sild (EKJ SK)	Kerstin Uiboupin (Võru)
XXV	2013	Saarjärve	(420)	Ats Sõnajalg (KEK RSK)	Merike Vanjuk (Kape)
XXVI	2014	Kuulma järv	(333)	Kaido Hallik (Ilves)	Mariann Sulg (Orvand)
XXVII	2015	Hatiku	(366)	Topi Hasu (OK Trian)	Eleri Hirv (OK Võru)
XXVIII	2016	Eoste	(337)	Reigo Teervalt (Peko)	Lorely Kõrvel (Kobras)
XXIX	2017	Poka	(297)	Kaur Kase (OK Võru)	Marianne Haug (OK Võru)
XXX	2018	Palojärve	(301)	Kristo Heinmann (OK Ilves)	Kirti Rebane (Tammed)
XXXI	2019	Janukjärve	(310)	Segei Popov (BMSTU)	Triin Jäädmaa (OK Võru)
XXXII	2020	Küka	(.....)